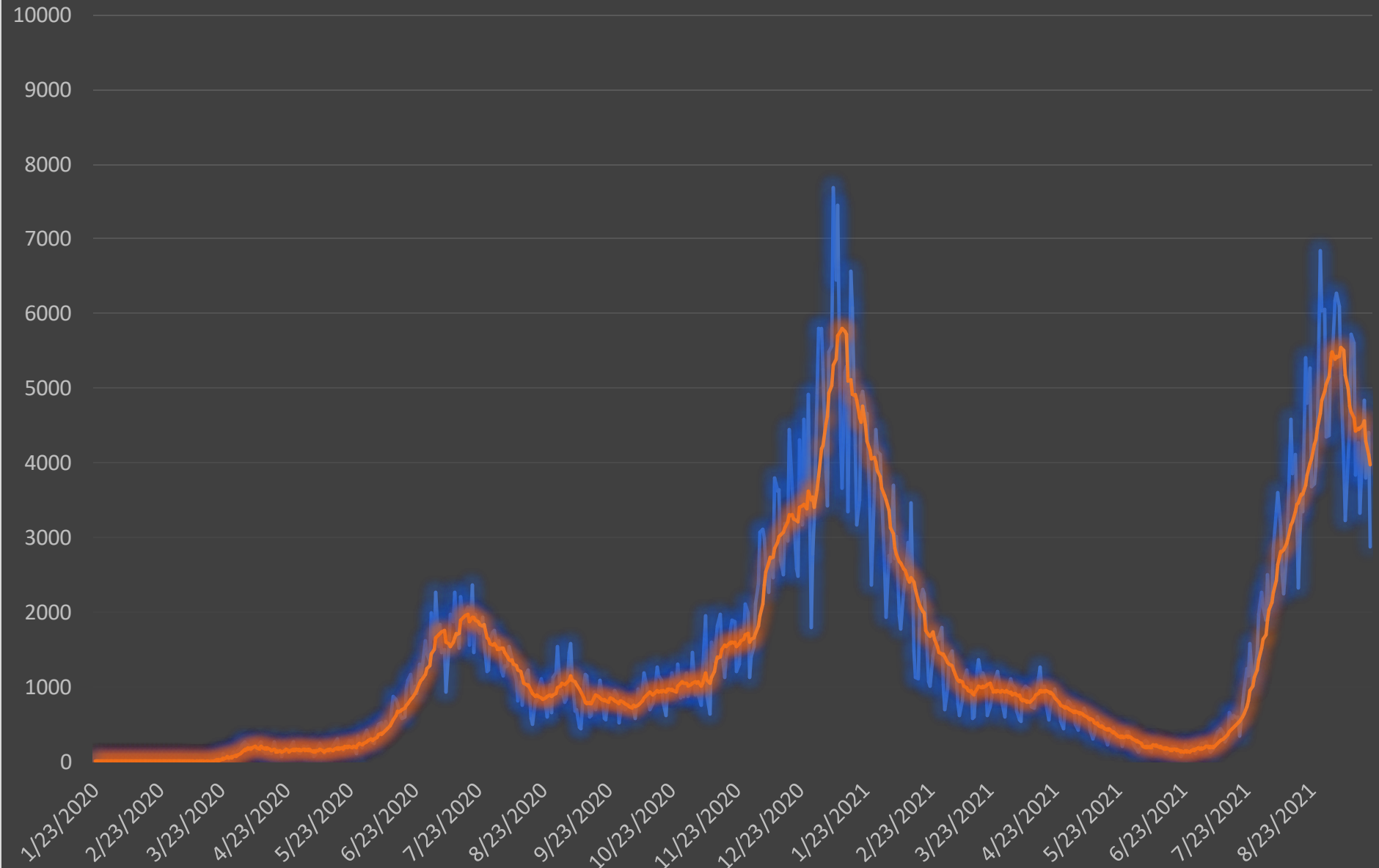


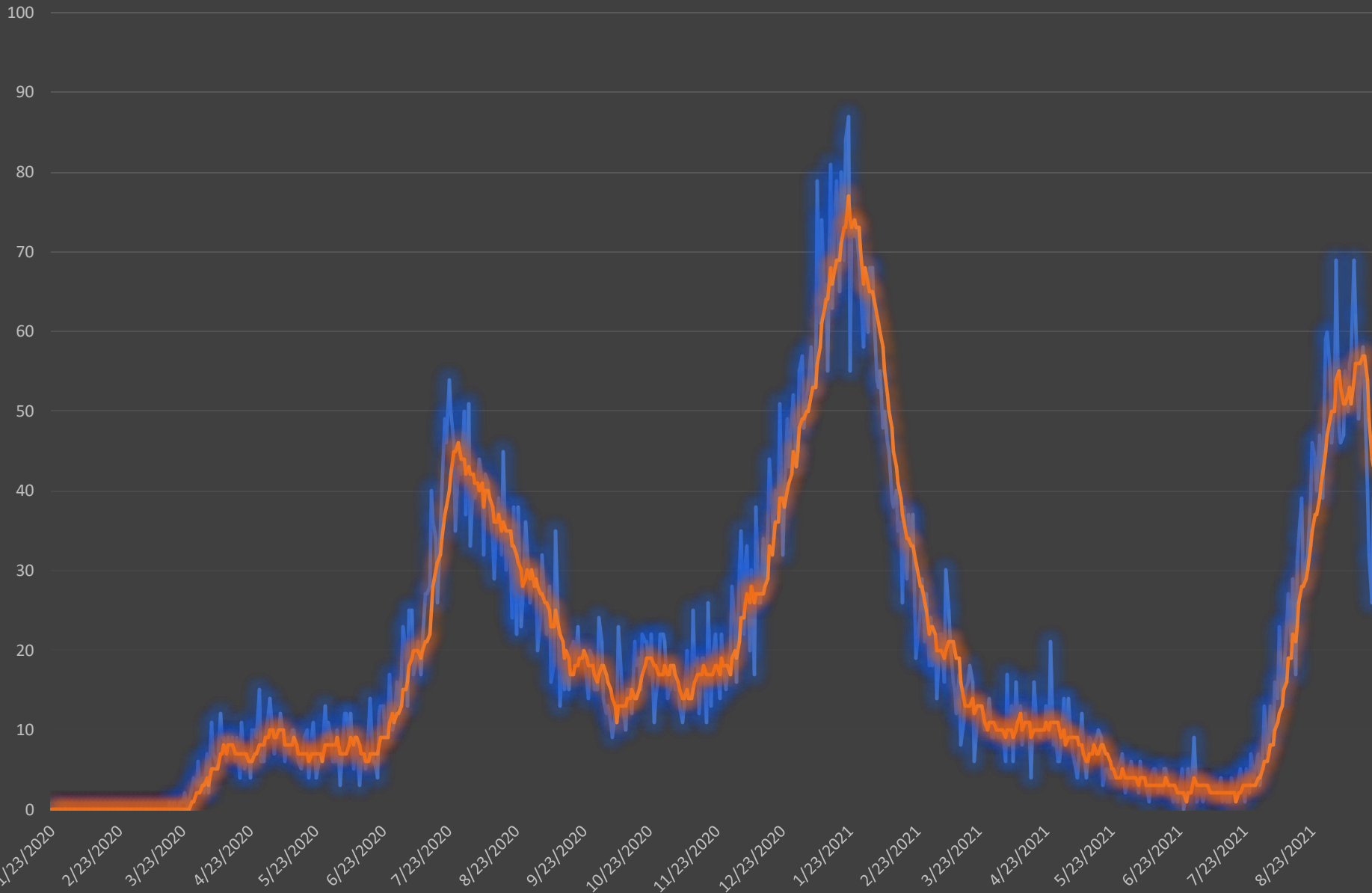
# Number of New Cases and Seven Day Moving Average Number of Cases, South Carolina January 23, 2020 - September 20, 2021

— New Cases — 7-Day Moving Avg Cases



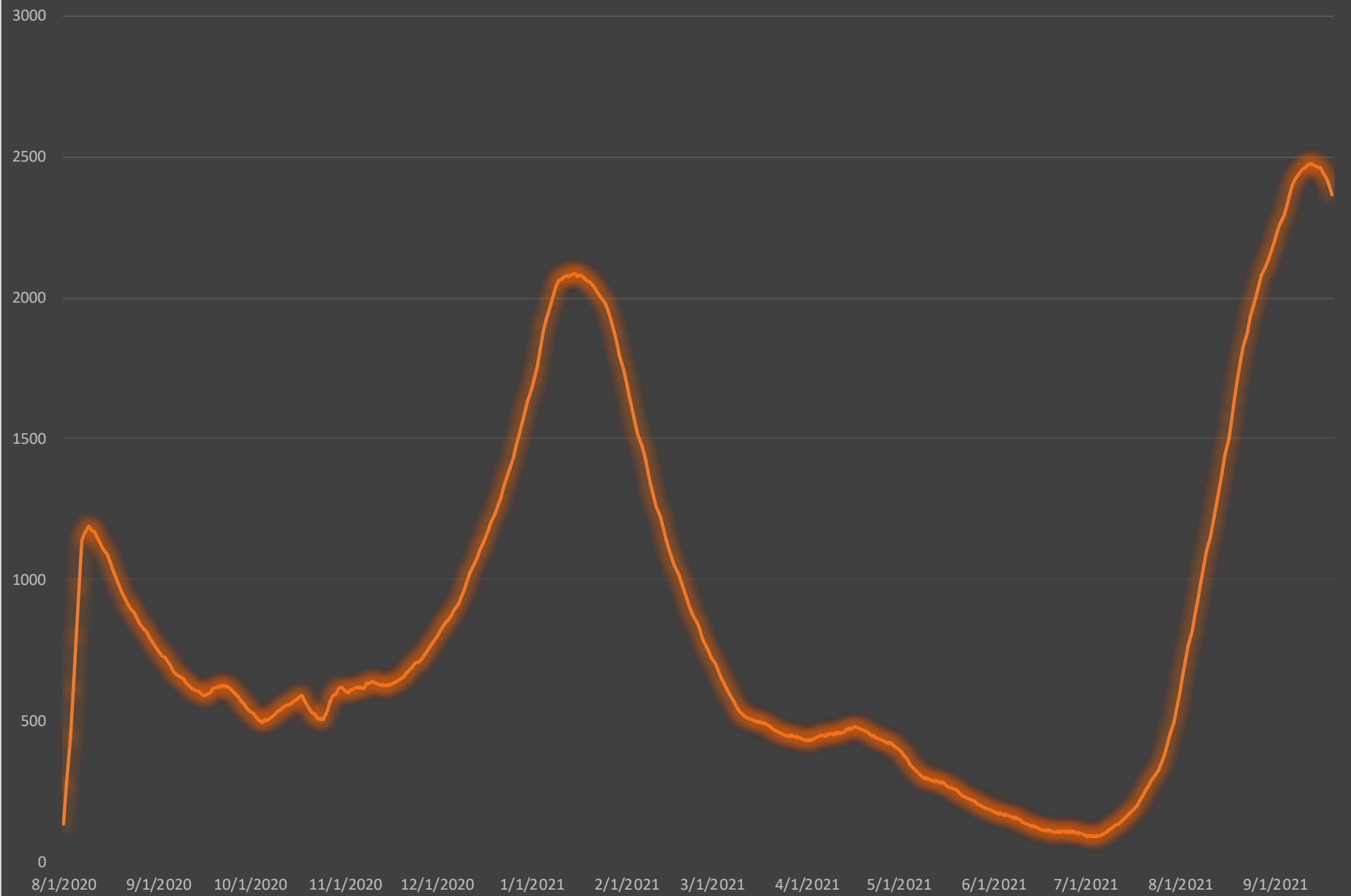
# Number of New Deaths and Seven Day Moving Average Number of Deaths, South Carolina January 23, 2020 - September 20, 2021

— New Deaths — 7-Day Moving Avg Deaths



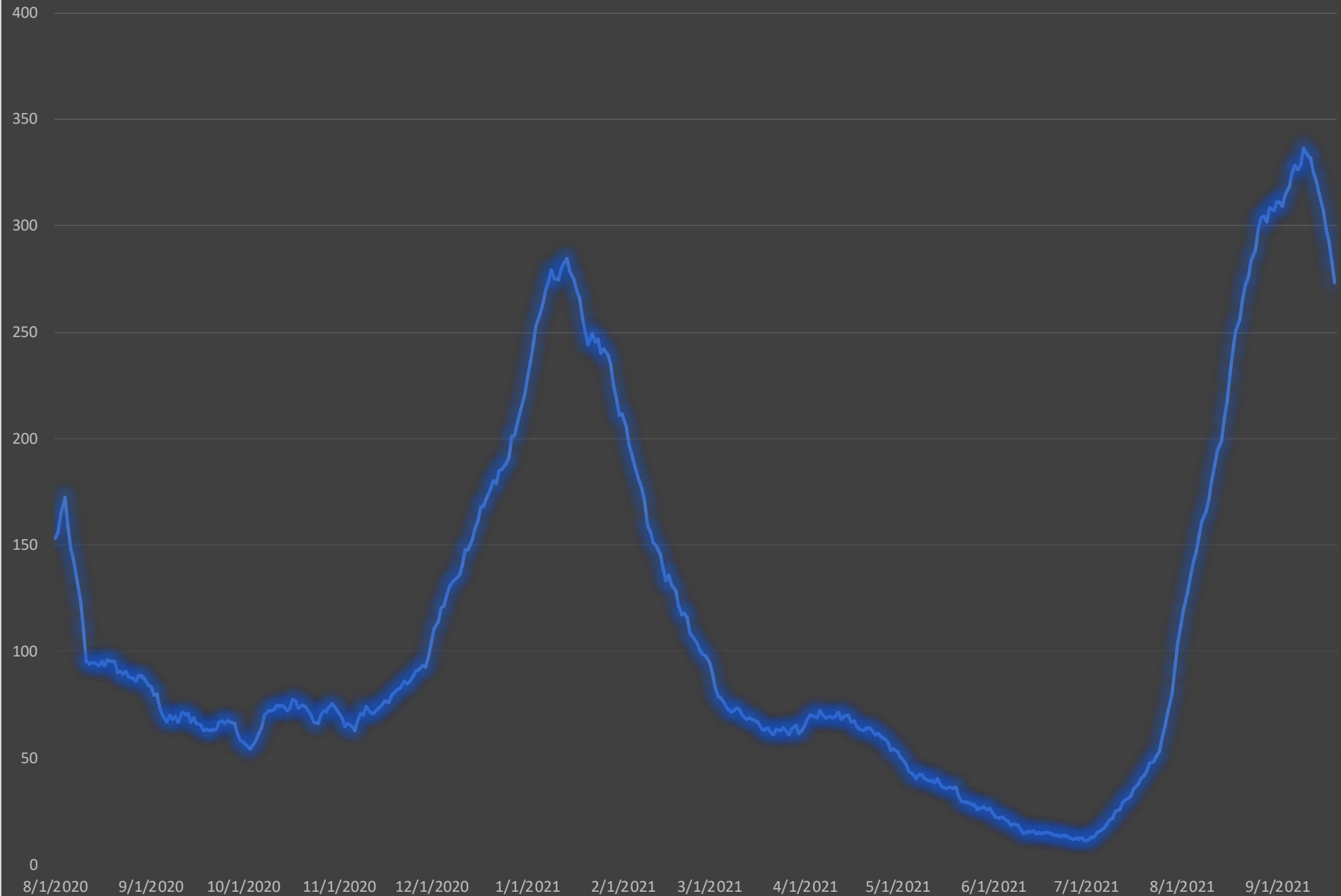
# Current Hospitalized COVID-19 Patients, South Carolina

## August 1, 2020 - September 20, 2021

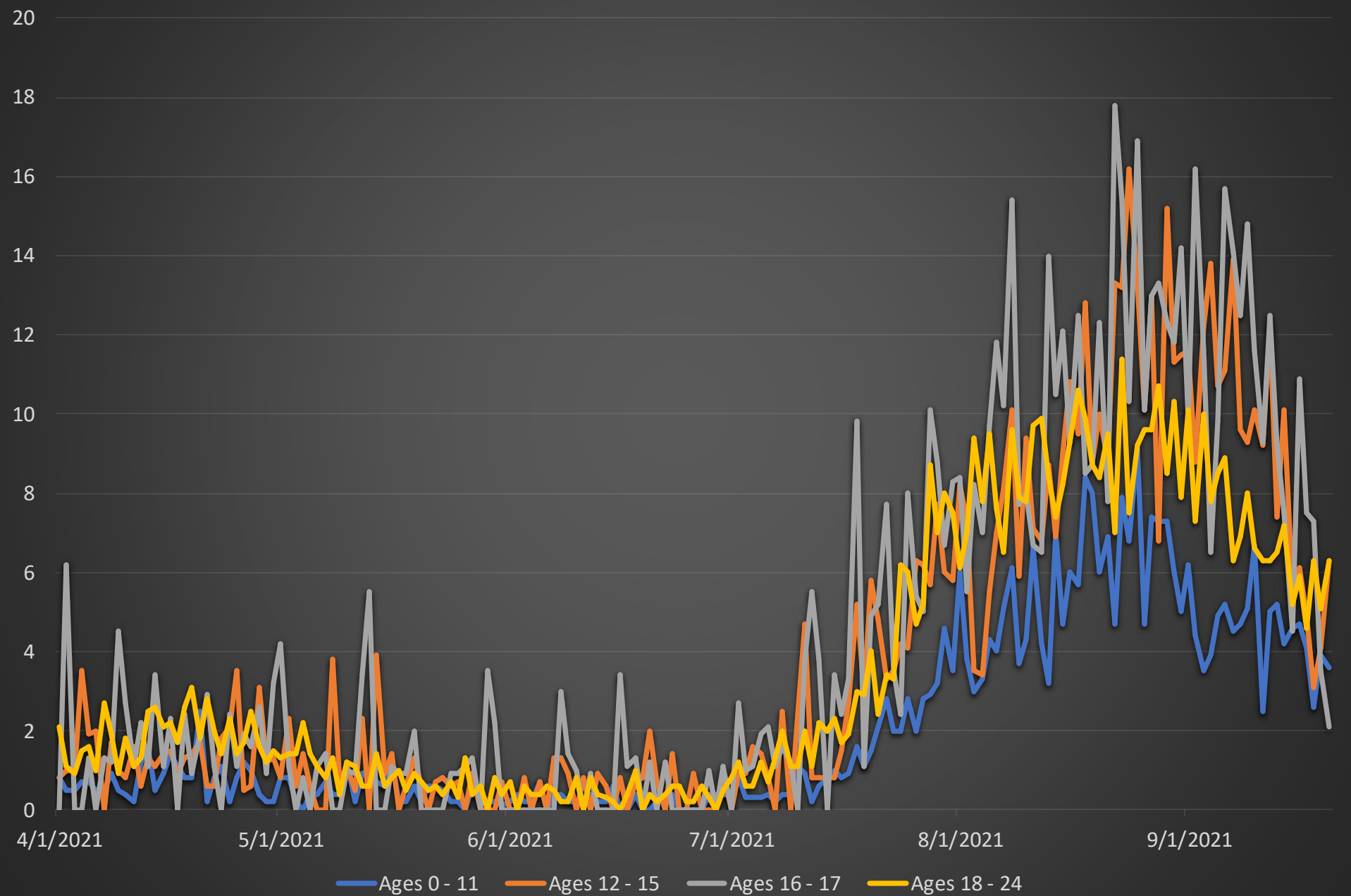


# New COVID-19 Hospital Admissions, South Carolina

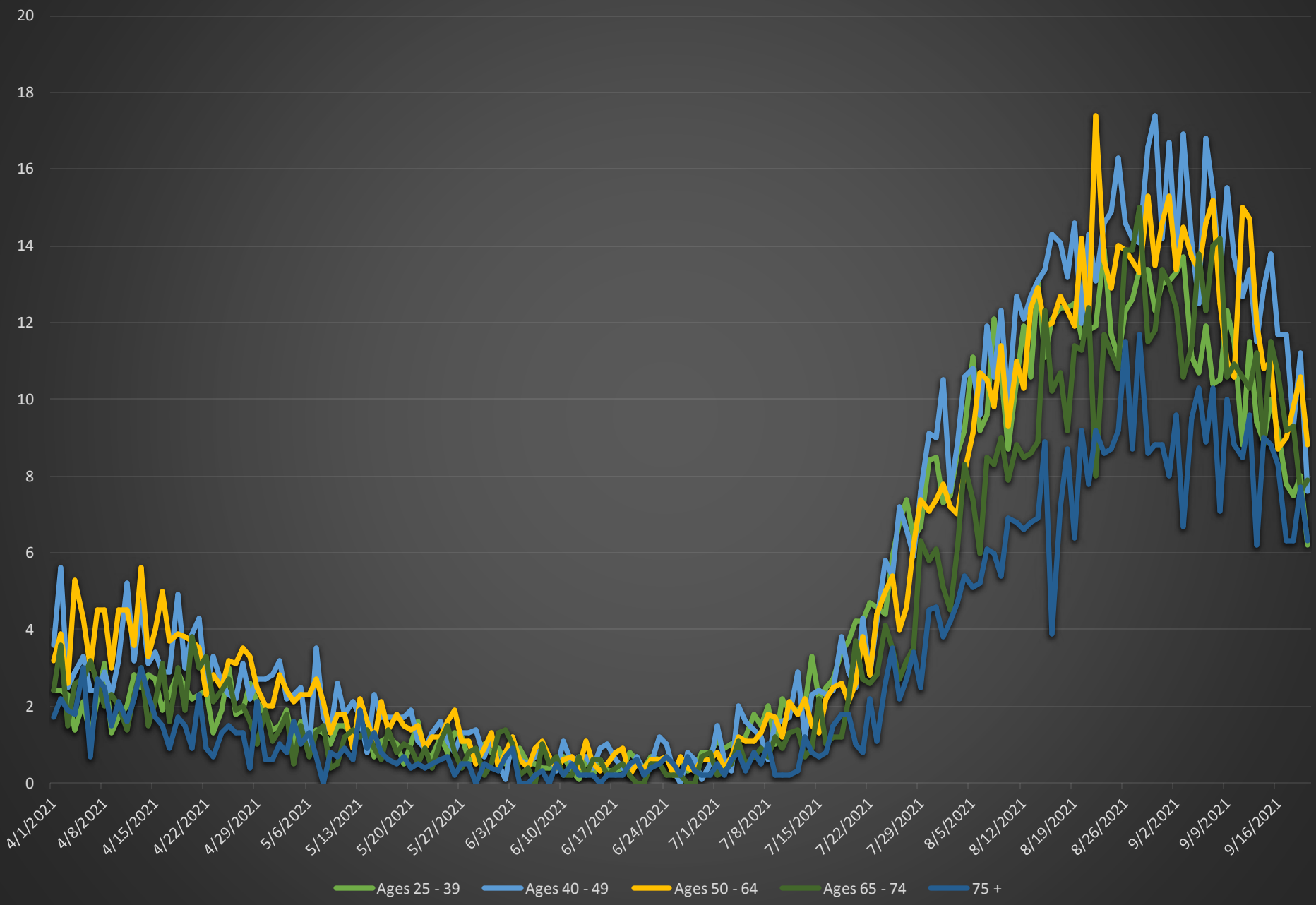
## August 1, 2020 – September 20, 2021



# Daily Percent of ED Visits with Diagnosed COVID-19 by Age, South Carolina April 1, 2020 - September 20, 2021



# Daily Percent of Adult ED Visits with Diagnosed COVID-19 by Age, South Carolina April 1, 2020 - September 20, 2021





## South Carolina Institute of Medicine & Public Health

Our **mission** is to collectively **inform policy** to improve health and health care

We **serve** as an **informed, nonpartisan convener** to provide evidence-based information relevant to policy decisions and other actions impacting the health and well-being of all South Carolinians



[www.imph.org](http://www.imph.org)

