



South Carolina Institute of
Medicine & Public Health

Our **mission** is to collectively **inform policy** to improve health and health care

We **serve** as an **informed, nonpartisan convener** to provide evidence-based information relevant to policy decisions and other actions impacting the health and well-being of all South Carolinians



@SC_IMPH



www.imph.org



@SC.IMPH



South Carolina
Institute of Medicine & Public Health
HEALTH POLICY FELLOWS
— Program —

HEALTH IN ALL POLICIES & NON-MEDICAL DRIVERS OF HEALTH

Legislative Staff Session



Introductions

*Please introduce yourself and
share a recent favorite photo of yours
with your table!*



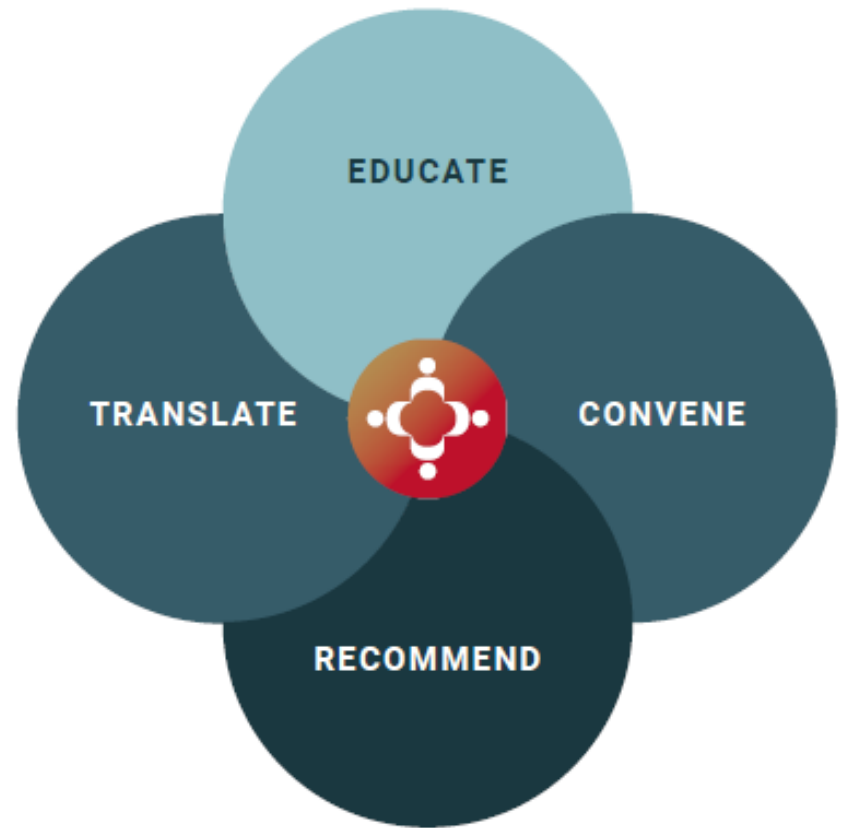
IMPH Overview

Maya Pack, MS, MPA
Executive Director
SC Institute of Medicine and Public Health



IMPH Overview

The South Carolina Institute of Medicine and Public Health convenes stakeholders around important health policy issues. IMPH publishes policy briefs, analyses, and reports based on in-depth research, collaboration, and consensus-driven taskforce recommendations.





Health in All Policies & Non-Medical Drivers of Health

Taryn Farrell, MPH
Research Associate &
Justina Siuba, MPH
Project Director

SC Institute of Medicine and Public Health



Health in All Policies



Source: CDC



Health in All Policies Cont.

The Five Key Elements of Health in All Policies:

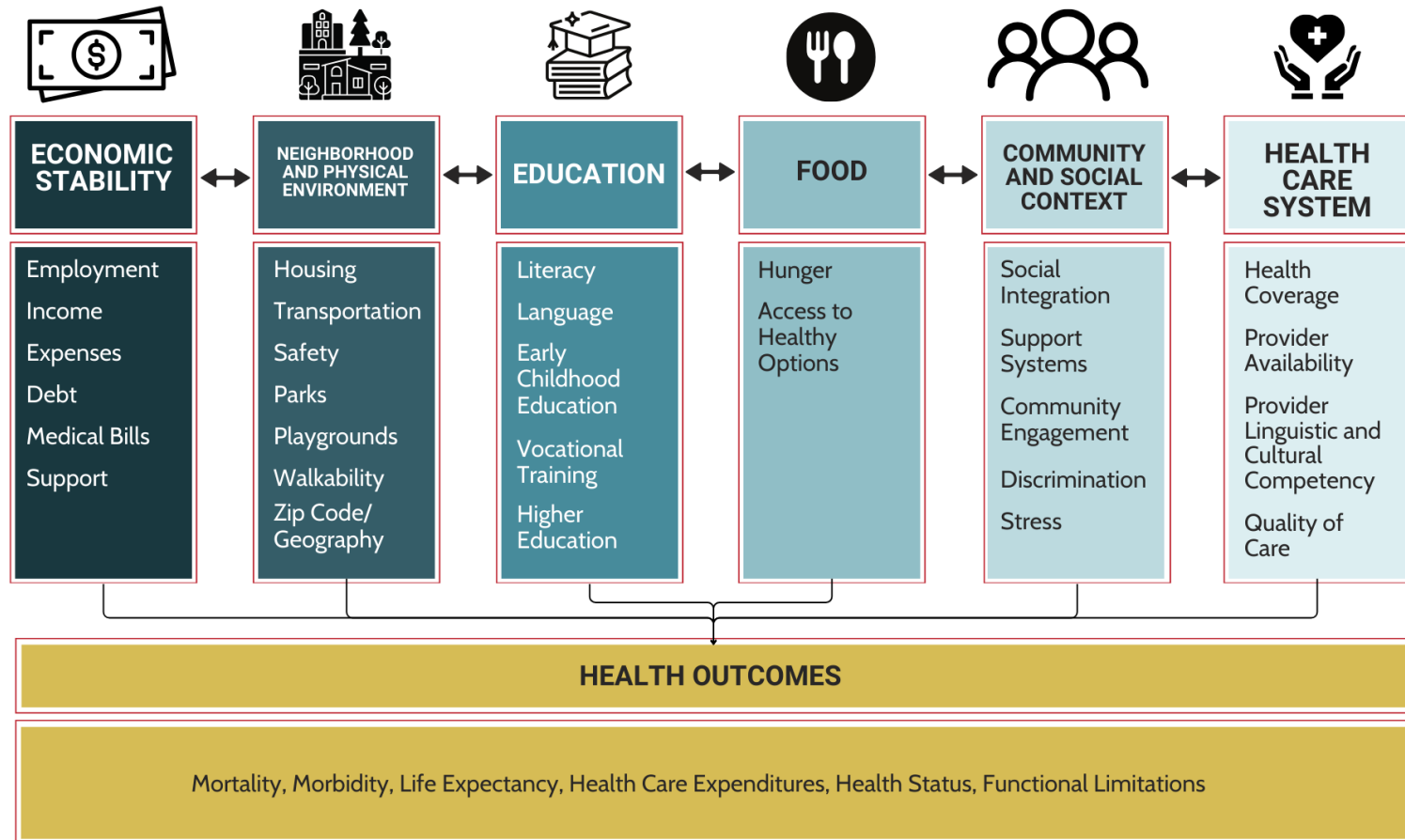
1. Promote health, appropriate access, and sustainability.
2. Support intersectoral collaboration.
3. Benefit multiple partners.
4. Engage stakeholders. Health in All Policies engages a variety of stakeholders, such as community members, policy experts, advocates, members of the private sector, and funders.
5. Create structural or procedural change.

Source: phi.org



Non-Medical Drivers of Health

Social Determinants of Health





Economic Stability

Examples:

- Employment
- Income
- Expenses
- Debt
- Medical Bills
- Support

Related Policies & Committees :

- H. 4622 – Medical Billing
 - House Medical, Military, Public and Municipal Affairs
 - Senate Medical Affairs





Neighborhood & Physical Environment

Examples:

- ❑ Housing
- ❑ Transportation
- ❑ Parks
- ❑ Playgrounds
- ❑ Walkability
- ❑ Zip Code / Geography

Related Policies & Committees:

- ❑ S. 284 – Development of Workforce Housing
 - ❑ Senate Finance Committee
 - ❑ House Ways and Means Committee





Education

Examples:

- Literacy
- Language
- Early Childhood Education
- Vocational Training
- Higher Education

Related Policies & Committees :

- H. 4655 - Unstructured and Self-directed Recess in Public Schools
 - ▣ House Education and Public Works Committee
 - ▣ Senate Education Committee





Food

Examples:

- Food Security
- Access to Healthy Options

Related Policies & Committees:

- H. 3125 – Fruit and Vegetable SNAP Grant Program
 - ▣ House Ways and Means Committee
- S. 613 – Child and Adult Care Food Program Week
 - ▣ Senate Stateside Session





Community, Safety & Social Context

Examples:

- ❑ Social Integration
- ❑ Support Systems
- ❑ Community Engagement
- ❑ Stress
- ❑ Exposure to Violence / Trauma
- ❑ Policing / Justice Policy

Related Policies & Committees:

- ❑ S. 612 – Child Welfare Service Principles
 - Senate Family and Veterans' Services Committee
 - House Judiciary Committee





Health Care System

Examples:

- Health Coverage
- Provider & Pharmacy Availability
- Access to Linguistically and Culturally Appropriate & Respectful Care
- Quality of Care

Related Policies & Committees :

- S. 855 – Healthcare Market Reform Study Committee
 - Senate Medical Affairs Committee



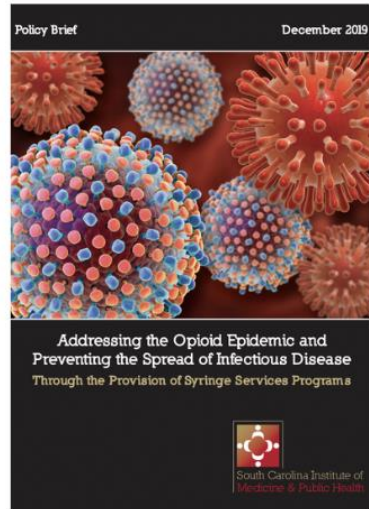


IMPH Reports & Policy Briefs

Erin Haire, JD
Associate Director
SC Institute of Medicine and Public Health



IMPH Reports & Policy Briefs





Health in all Policies

What IMPH can do for you...

Amelia Wilks

Legislative Initiatives Coordinator
SC Institute of Medicine and Public Health



What IMPH can do for you...

- Provide you with timely and relevant data
- Translate complex research and data
- Connect you to subject matter experts
- Provide ready-to-go information on a variety of topics
 - Access to health care
 - Behavioral health
 - Workforce
 - Healthy living
 - Long-term Care/Older adults
 - Rural Health



Thank you!!

- Please sign up for IMPH's newsletter here:
<https://imph.org/> → stay informed (top right)
- If we can assist you with anything, please feel free to reach out!
amelia@imph.org / 803-528-5177