

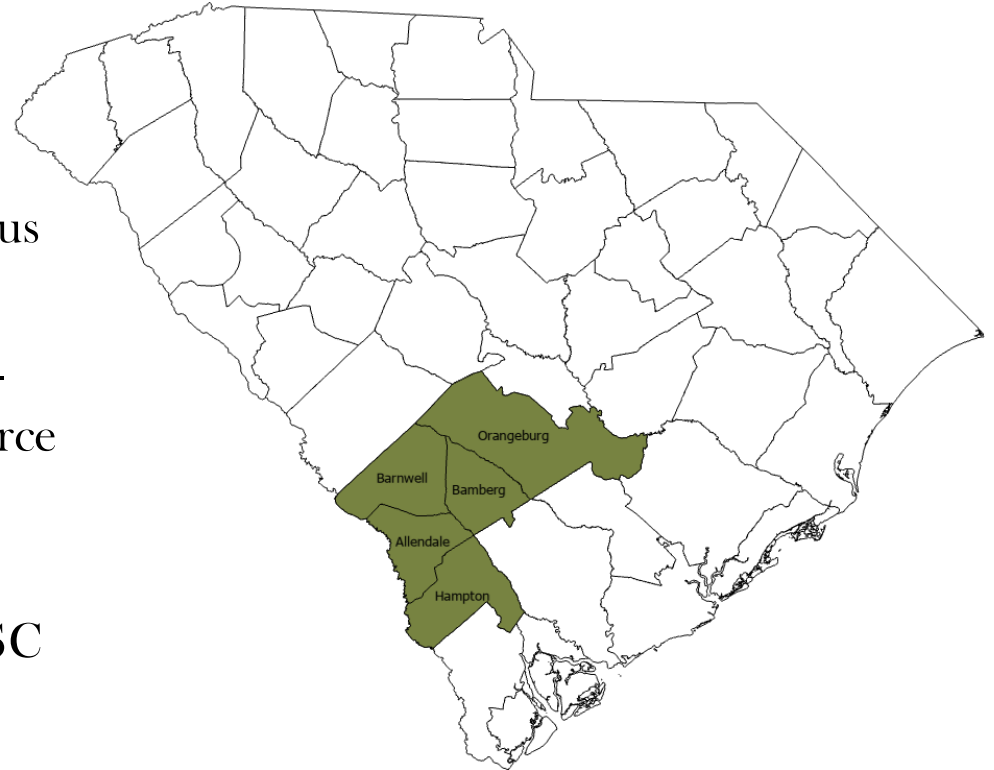


SOUTH CAROLINA OFFICE OF
RURAL HEALTH

FAMILY SOLUTIONS

WHO WE ARE

- a community-based program, of the SC Office of Rural Health, with a MCH focus
- program home for Healthy Start, Nurse-Family Partnership, and a Family Resource Center
- Supportive partner of Healthy Steps in SC



WHO ARE WE



- Community Health Workers
- Doulas
- Certified Childbirth Educators
- Male Involvement Coordinator
- Healthy Steps Specialist
- Nurse Practitioner
- Nurses
- Social Workers
- Reproductive Health Specialists
- Certified Lactation Consultants

DETERMINANTS OF HEALTH



HOME VISITING

HEALTHY START

- 3 sites in SC
- 1997
- Criteria:
 - Pregnant or delivered a special needs or low birthweight baby
 - live within the service area

NURSE-FAMILY PARTNERSHIP

- 7 sites in SC
- 2015
- Criteria:
 - pregnant with 1st viable pregnancy
 - less than 29 weeks pregnant
 - live in Orangeburg county
 - meet income requirements

HOME VISITING: Process

- Referral
- Assigned for assessment
- Assessment scheduled and completed
- Assigned to a home visitor based on findings from the assessment
- Case management for up to 18-24 months
 - In person- home visits
 - Virtual visits
 - Groups in-person with a virtual option

HOME VISITING: Process

Initial Assessment

- Medical hx; pregnancy hx
 - Underlying conditions
 - Outcomes of previous pregnancies
 - Medications prescribed
 - Previous use of family planning
 - Breastfeeding hx
- SDoH
 - Household
 - Education
 - Employment
 - Areas of need
- Screening
 - depression, anxiety, ipv, substance use
- Goal Setting
- Initial Referrals

Prenatal Period

- Topics Covered:
 - Nutrition
 - Childbirth
 - Breastfeeding
 - Women's Health
 - Stress/Coping Strategies
 - Identifying a Support System
 - Health Maintenance
 - BP cuff given
 - Safe Sleep
 - Reading to Baby
 - Book given
 - Parenting Skills
 - Family Planning
 - Signs and Symptoms of Preterm Labor
 - Doula Support
 - Referrals

* *FS offers group sessions to on childbirth, breastfeeding, doula comfort measures, preconception health, and health maintenance post delivery.

HOME VISITING: Process

Postpartum Education and Support

- Breastfeeding support with latching and pain
- Four (4) Weekly home visits
 - Postpartum Curriculum:
urgent maternal warning signs, anxiety and depression, the postpartum visit, birth control options
- Monthly visits until program completion
- FS Peer Support Group

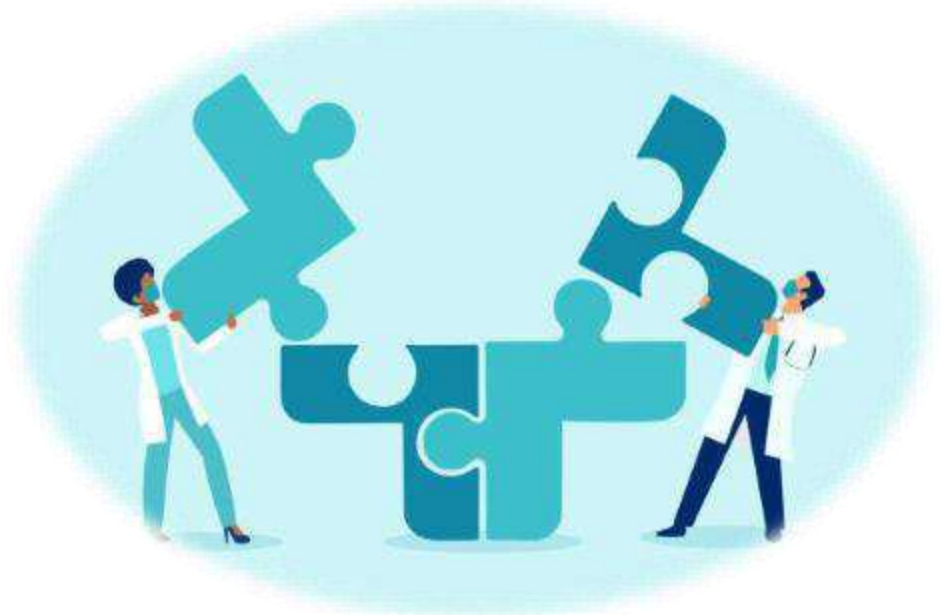
- Postpartum Incentive
 - Birth incentive
 - 6-Week Postpartum incentive
 - Well child visits incentive



CLINICAL COLLABORATION

Clinical Collaboration:

- Monthly team meeting with OB or MCO and FS staff
- Weekly maternal mortality case review with the social worker and the nurse practitioner to:
 - discuss medical hx and concerns
 - provide updates from prenatal and postpartum appointments
 - discuss client concerns
 - understand prescribed clinical regimen
 - discuss suggestions for education



HOME VISITING: Impact

Based on Performance Data for 2024, Family Solutions:

provided direct services to a total of 901 participants through 5603 home visits

a 15.6% increase in participants returning in a timely manner for postpartum care (76.4% in 2021 to 92% in 2024)

experienced 0 infant and/or maternal deaths among enrolled program participants

COMMUNITY ENGAGEMENT

CONSORTIUM AND FAMILY RESOURCE CENTER



SOUTH CAROLINA OFFICE OF
RURAL HEALTH
FAMILY SOLUTIONS

Family Resource Center

A flexible, family focused culturally sensitive hub of support and resource

Humana
Healthy Horizons⁺
in South Carolina

Healthy Connections 


Children's Trust
OF SOUTH CAROLINA

 **DSS** SOUTH CAROLINA
DEPARTMENT OF SOCIAL SERVICES



BlueCross BlueShield
of South Carolina



DMH South Carolina
Department of
Mental Health

CPM 
Federal Credit Union
Dream. Plan. Own.


**South Carolina
Legal Services**
Balancing the Scales of Justice

SOUTH CAROLINA OFFICE OF
RURAL HEALTH
FAMILY SOLUTIONS


HOPEHEALTH

 SOUTH CAROLINA
Infant Mental Health Association

Community Action Network

Briggman Insurance Agency


**absolute
total care.**
Healthy Connections 


Midlands Fatherhood Coalition

 **MOLINA**
HEALTHCARE

SOUTH CAROLINA OFFICE OF
RURAL HEALTH
FAMILY SOLUTIONS

FRC AND COMMUNITY: Impact

770 people have been helped by the FRC

Over \$8,000 in financial assistance given to those in need

FRC On Wheels

- Outreach provided to 219 people
 - Clothing and school supplies distribution at apartment complexes
 - Outskirts of Orangeburg, Allendale, Hampton
 - Male Involvement Support
 - Dudes, diapers and wipes in Hampton







THANK YOU



Any Questions?

SOUTH CAROLINA OFFICE OF RURAL HEALTH

FAMILY SOLUTIONS

CONTACT US



Lamikka Samuel

Senior Director

Isamuel.familysolutions@scorh.net

Social:



@FamilySolutions.scorh



@Family_Solutionscorh



@SCORH



@scruralhealth



@scruralhealth

Website:

<https://familysolutions.scorh.net/>

Address:

1031 Middleton St. Orangeburg,
SC 29115

Phone:

(803) 531-8008

Text SCRURALHEALTH to 66866 to subscribe to our "Rural Focus" newsletter!