

TASKFORCE:

Rural Access to Care for Improving Maternal and Infant Health

Taskforce Meeting
September 24, 2024



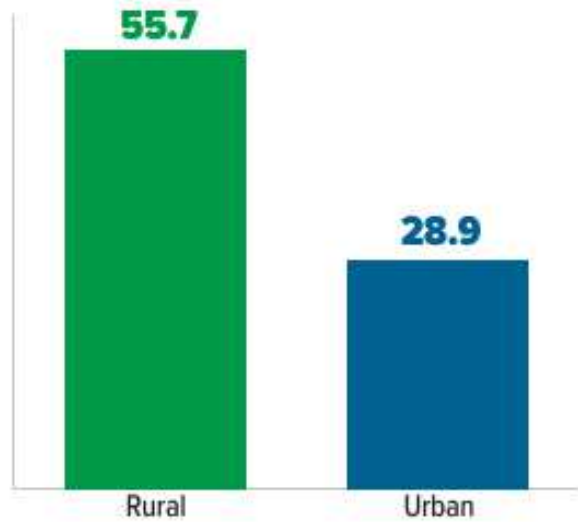
South Carolina Institute of
Medicine & Public Health



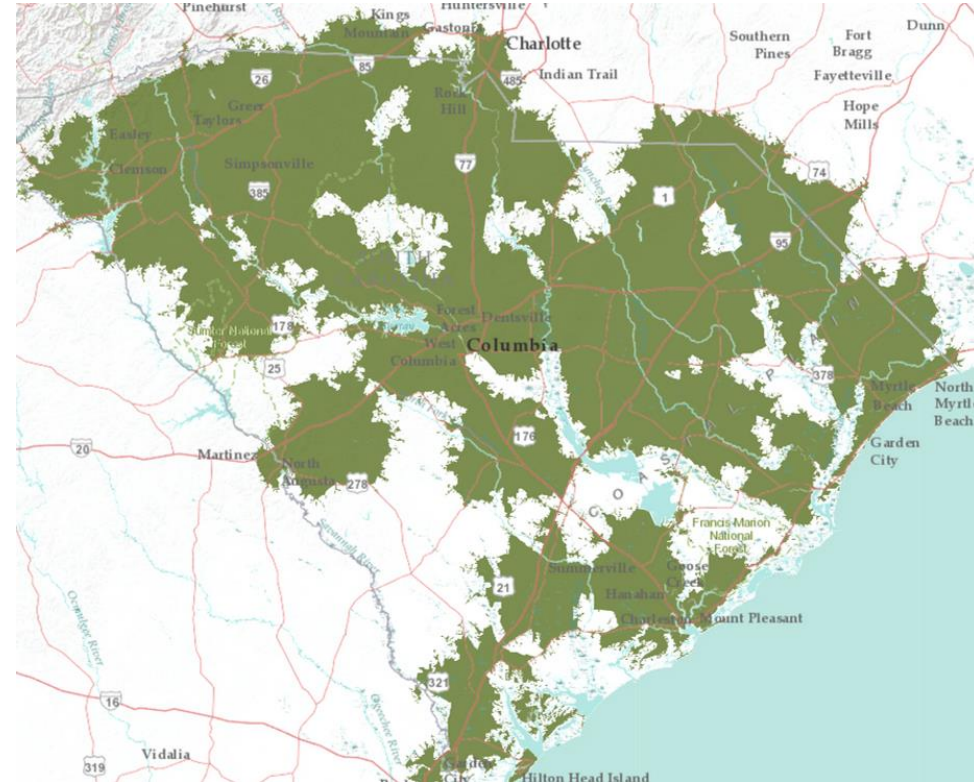
The Why

Pregnancy-Related Mortality Rate, by Rurality

Rate per 100,000 live births; 2018-2020



Drive Time to OB/GYN Within 30 Minutes



Sources: SC Department of Public Health South Carolina Maternal Morbidity and Mortality Review Committee 2024 Legislative Brief; Center of Rural and Primary Healthcare (CRPH) at University of South Carolina

Introductions

IMPH Team

Introductions

Please share your name,
role, and organization at your table.

Welcome

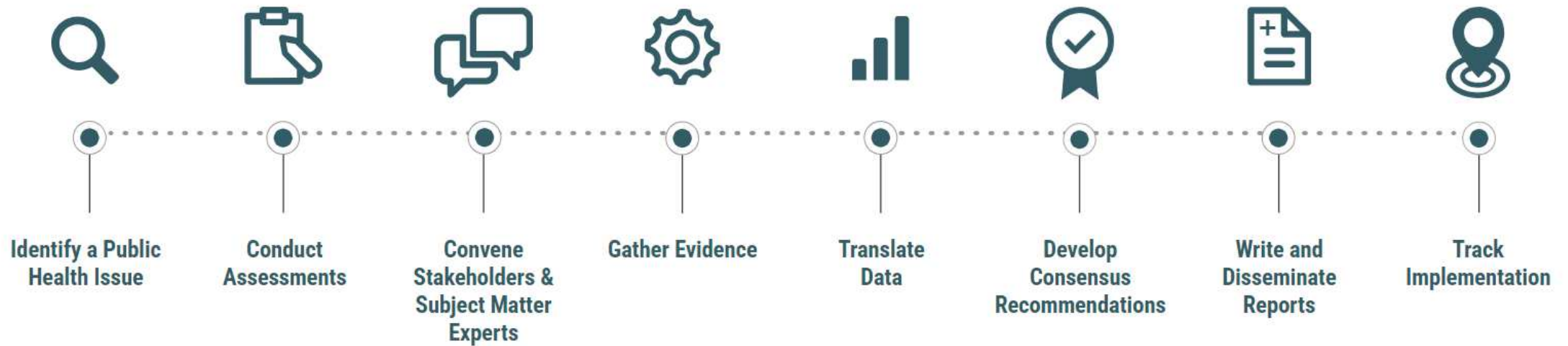
Dr. Lisa Waddell

Taskforce Process Overview

Justina Siuba, MPH
Project Director, IMPH



Taskforce Process



Taskforce Guiding Principles

Consensus: Even though the decision may not be the first choice, everyone can live with and support the decision. Consensus does not mean unanimous agreement.

Inclusivity: Effective collaboration requires transparency and inclusiveness, equality among all participants and active participation from all partners.

Impact: Effective collaboration requires acknowledging capacity and scaling interventions to realistic goals.

Taskforce Guiding Principles Cont

Strategic Alignment: Effective collaboration requires all participants to disclose when our own interests are in conflict with those of the taskforce.

Respect: Effective collaboration requires mutual trust and respect for organizational boundaries, continuity in communication and interaction and a distinction between policy analysis and political commentary.

Goal of Taskforce

Develop a 10-year action plan for South Carolina to address maternal and infant health outcomes through improved access to care in rural areas.

The action plan will include 1-year, 3-year, and 10-year goals and measures of success.

Goal of Taskforce Cont.

Through this collaborative process we will utilize a prevention framework, focusing the goals and objectives of the action plan on primary, secondary and tertiary prevention.

- Primary prevention – prevents outcomes from occurring before health issue begins
- Secondary prevention – screening for early detection for early treatment
- Tertiary prevention – address existing outcomes to lessen and slow

Research Questions

- How can access to culturally appropriate and timely care for rural, birthing women and infants be improved? (*prenatal, labor and delivery, and postpartum care*)
- What are the drivers of poor outcomes for rural birthing women and infants and what can be done to improve the outcomes?
- Why has South Carolina not experienced improvements with maternal and infant health outcomes when there is such a large investment across the state?

Recommendation Development

Please keep the following criteria in mind when developing recommendations for the 10-yr Action Plan.

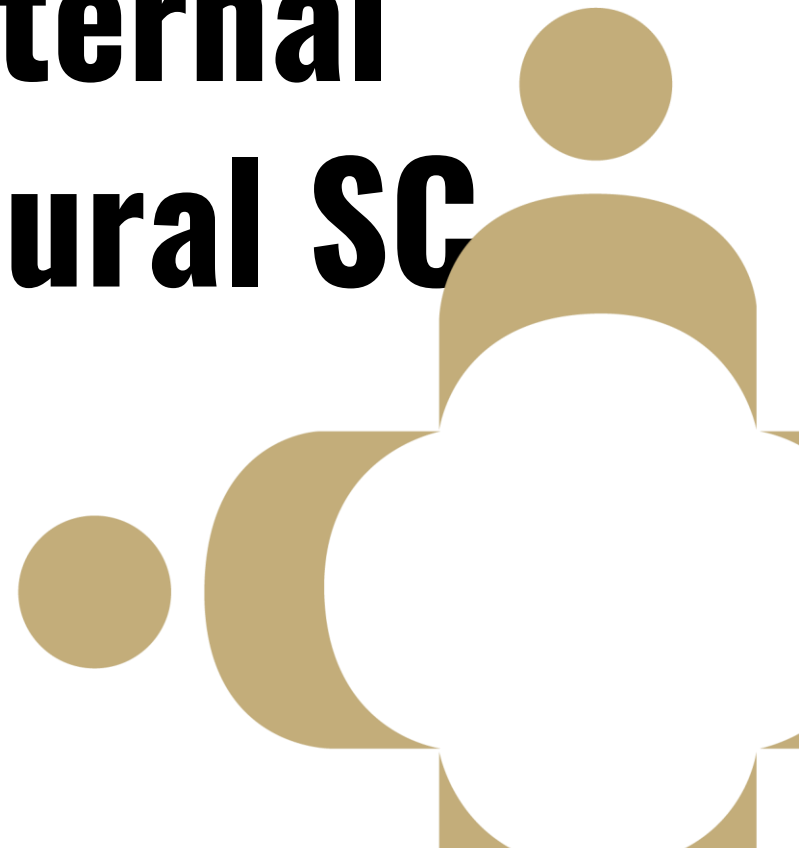
- Specific: Who is responsible, and for what? Name a lead entity if possible.
- Measurable: How will we know if we have achieved success?
- Achievable: There needs to be a chance it can happen.
- Results-oriented: What does the outcome look like?
- Time-Bound: When should/will the activities and actions occur?
- Clearly written: Easy to understand.

Include an estimate of resources that will be required, when possible.

Recommendation Development Cont.

- I. What ideas/recommendations do you have to improve access to care in rural South Carolina to address maternal and infant health outcomes?
- II. How will this recommendation impact health outcomes for mothers and infants in rural South Carolina?
- III. What is a realistic timeline to implement this?
- IV. Who are the key players or champions to support this idea and recommendation?

Panel Presentation: Maternal and Infant Health in Rural SC



Data Deck Overview

Taryn Farrell, MPH
Research Associate, IMPH



Data Deck

Data Deck Overview and Selected Access to Care Indicators

Recommendation Development Discussion

Justina Siuba, MPH
Project Director, IMPH



Recommendation Share Out



Next Steps

Abigail Hubbard, MPH
Health Policy Analyst, IMPH



Next Steps

Next Meeting

AHEC Walterboro Training Center

October 17th, 11 a.m. – 2 p.m.

Please complete the evaluation

We will send out minutes and the recommendation development link in a week.